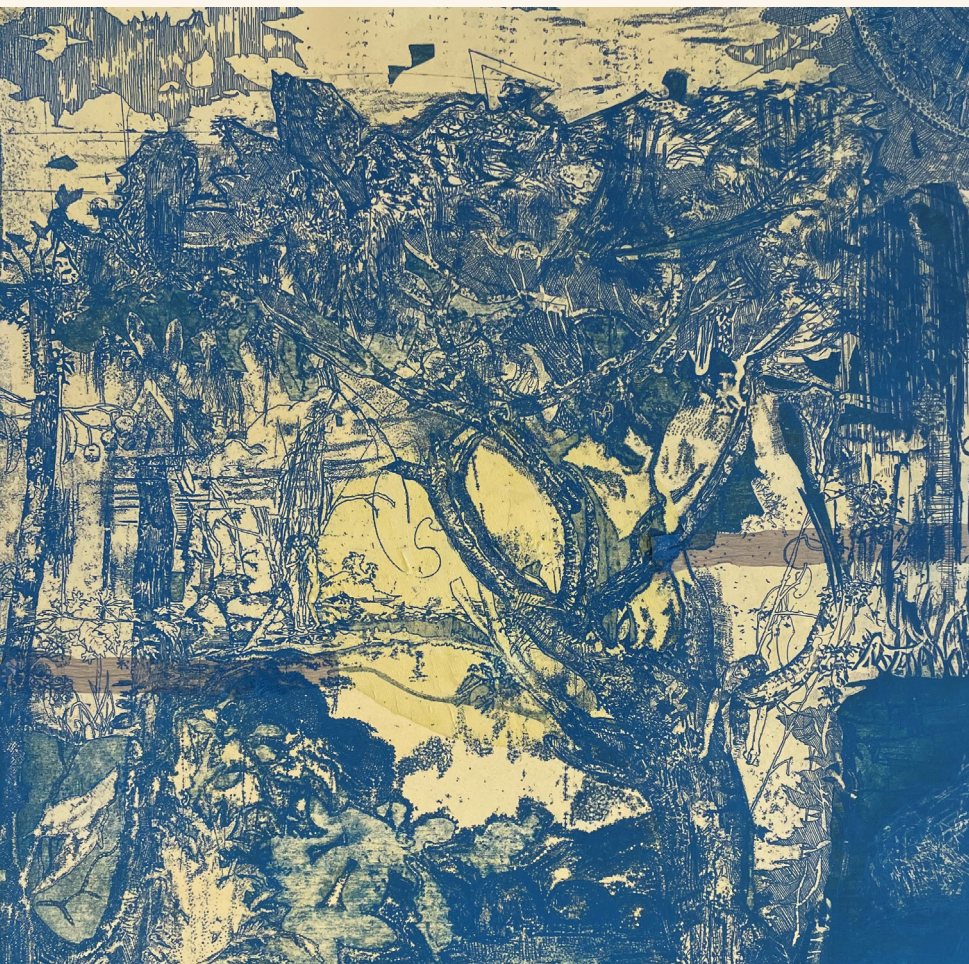


# Midland Junction Arts Centre

MANAGED BY MUNDARING ARTS CENTRE INC | SUPPORTED BY CITY OF SWAN



## UPPER REACH

ANTONY MUIA

7 May - 16 July 2022



Developed during an artist residency at Midland Junction Arts Centre, this body of work is inspired by the unique flora and fauna found in Perth's eastern suburbs and hills. Muia explores a synergy between figuration and the natural world and considers the history and traditions of the printmaking genre, including its strong ties to illustration and storytelling. These experimental etchings reflect both the representational qualities of our surroundings and the relationships of people with the environment.

Antony Muia 2022 @antmuia



Xanthorrhoea

drypoint on hand coloured paper

*War, pandemic, anxiety swirling around.*

*Deep and slow breaths will replace the shallow whenever there is a connection to the natural environment.*

*A focus on the central trunk reaching deep to the inner core will return an equilibrium, anchored by strong roots and connections.*

— Shell



Lake Karri

etching and Chine collé on hand coloured paper

*A wonderful thing to climb through a forest, over fallen logs and through the dense bush, and to walk around a pristine lake and feel its coolness. I imagine it would be very quiet with only the noise of the wind and the birds.*

— Alice



Untitled

etching and Chine collé on hand coloured paper

*Ant Muia's work reminds me of time spent in nature. I picture myself walking through Nyaania Creek as a visitor, or sitting and watching as part of the landscape. I think of the time Ant spends observing the trees, scratching and etching his plate and creating a print. I think of the time I'll spend looking at the piece, watching it grow.*

— Toby



Untitled II

etching and Chine collé on hand coloured paper

*The figure gazes up in wonder at the tall trees - a reminder that we are insignificant in the natural environment that will remain long after we leave.*

— Jack





Mother & Child  
etching on hand coloured paper

*This work evokes memories of childhood. Stories of the Australian bush, both harsh yet beautiful. The artist's skill at storytelling is perfection.*

*I see the darkness of the bush in the figures at the top of the drawing and the softness and tranquillity in the water scene.*

*If you look closely you can see all manner of creatures, real and imagined, long legged ants, flowers and all sorts of bush creatures.*

*The banksia flower is drawn perfectly. It is both beautiful yet thorny like its leaves.*

*Typically like the Australian bush.*

*Harsh yet breathtakingly beautiful.*

*This work can be viewed many times over, each time finding and discovering something new.*

— Lynette

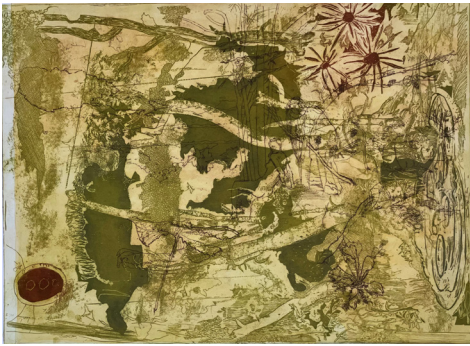


Upper Reach  
drypoint on hand coloured paper

*This piece has an exquisite balance between alluring and tranquil. Just like a featherlight seductive kiss offers the promise of more if you surrender yourself.*

*Antony's work has so many wondrous layers. I love the journey.*

— Bec



Reclining Figure with Daisies  
etching on hand coloured paper

*The wildflowers are scattered amongst the forest, sharing the space with the moss and trees. The figures melt into the picture and become part of the forest.*

— Caroline



Night Swim  
etching on hand coloured paper

*This work is a comforting reminder to me that nature was here long before humanity and will exist long after we are gone. The figures are quietly interacting with their surroundings, however, are not the focus of the image. They step carefully through the bush, a suggestion of how our relationship with the environment should be: appreciative, peaceful, without ownership.*

— Dominique



Bridgetown  
etching on hand coloured paper

*At first glance, the work evokes a feeling of tranquillity and human simplicity.*

*The deeper I look into it, I feel a sense of sadness and loss.*

*An interesting contradiction of emotion.*

— Kim



The Cave (Mimesis II)  
etching

*Having a passionate affection for our indigenous flora, I'm drawn to this work for the delicate, spiderly floral detail in the foreground.*

*Dark figures dancing in the background are seemingly unaware of the abundance of natural beauty close by.*

*For me, this piece evokes memories of quintessential friends' gatherings in the hills with the scarp and plain opening out below.*

— Erin



Untitled Island  
etching on hand coloured paper

*I was immediately drawn to a memory of ancient 'Oriental' maps, which present stylised views of a landscape and often with characters, features or a story in them. The work appears to me as a large and smaller islands surrounded by water with the sun at the top left corner. The various elements and intricacies in the work, including the symbol at the bottom, support this.*

— James



The Bay  
etching on hand coloured paper

*I love the way the trees wrap around the water, as if protecting it. The wind has changed the shape of the trees, so that they bend towards the water.*

— Suzy



The Garden (Mimesis I)  
etching

*A moonlight walk in the winter forest.*

*The cool air on my bare skin makes me feel real, alive, reborn.*

*I am once again connected to my Mother Earth.*

— Deb



Night Swim II  
etching on hand coloured paper

*On an early winter morning, the boy set off on an adventure – out his back gate into the bush. There was a slight mist in the air and tiny droplets of water on the leaves of the trees. He jumped over the puddles on the bush track and squinted his eyes at the morning sun breaking through the clouds. The track climbed upwards over the hill and as he walked, he could hear the sound of water. After what seemed like a very long time, he reached an outcrop of granite rock overlooking the winter creek. He scrambled up the rocks until he found a place to sit and rest. He looked down at the water, trees and rocks and imagined what it would be like to climb down and follow the creek on its journey down the valley.*

— Carrie



COVER IMAGE

## Marri (detail)

etching and Chine collé on hand coloured paper

*Black pond of disbelief, whimsical whirling, contrasting shapes of a scarred and intimidating textured landscape.*

*Marks that blotch with contrasting, hacksawing fine lines draw me in to examine subtle details of nature and human existence. Through the chaos, humans find solace.*

*Reminds me of my childhood scratching pad, transferring patterns of complex geometric shapes.*

— Trenton

## Midland Junction Arts Centre

MANAGED BY MUNDARING ARTS CENTRE INC | SUPPORTED BY CITY OF SWAN

276 Great Eastern Highway Midland WA 6056

T: 08 9250 8062 | [info@midlandjunctionartscentre.com.au](mailto:info@midlandjunctionartscentre.com.au)

Open Wed - Fri 10am - 5pm, Sat 11am - 3pm | Closed Sun - Tue & Public Holidays

[MIDLANDJUNCTIONARTSCENTRE.COM.AU](http://MIDLANDJUNCTIONARTSCENTRE.COM.AU)



Midland Junction Arts Centre respectfully acknowledges the traditional owners and custodians of the land on which we operate, the Whadjuk people, as well as other First Australians connected with this land. We pay our respects to Elders both past and present.